

09/08/19

CONTRACT: DA00357 WBS ELEMENTS: 2017CPT.01.26.10581.1, 44828

STATE OF NORTH CAROLINA
DIVISION OF HIGHWAYS

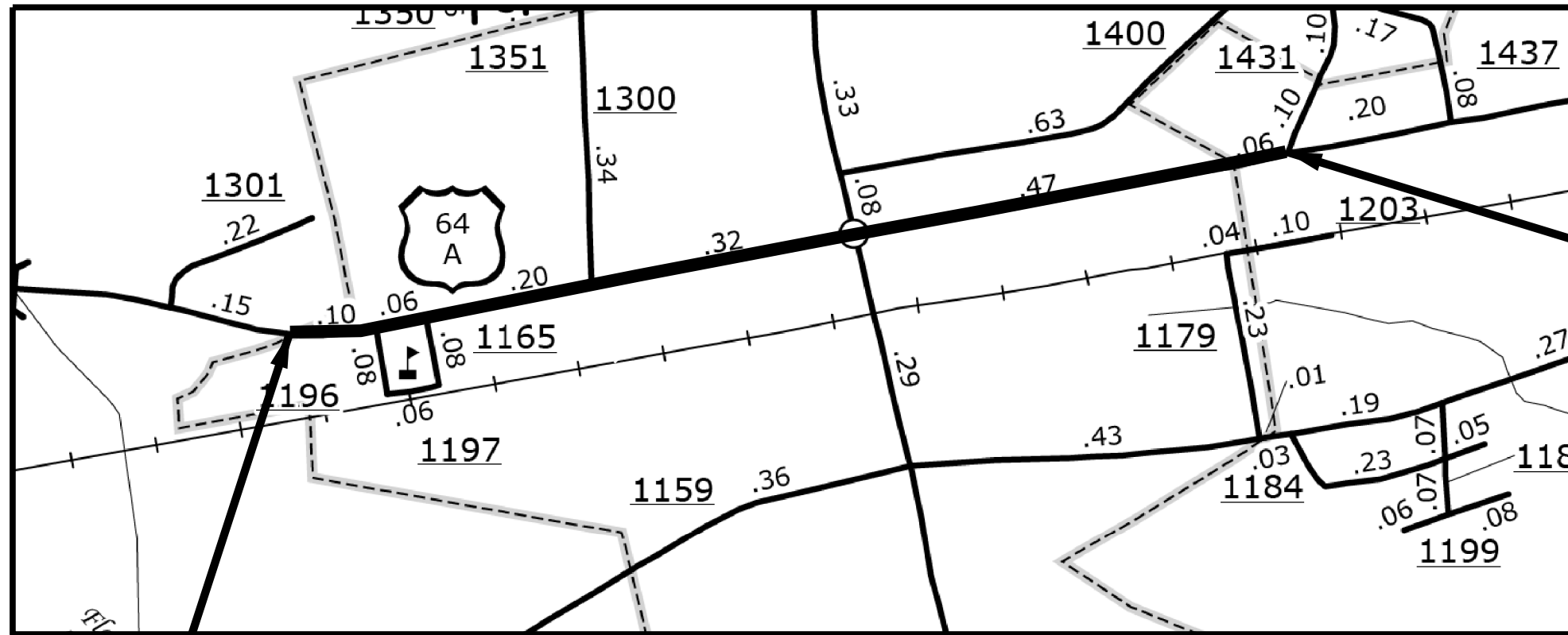
MARTIN COUNTY

STATE	STATE PROJECT REFERENCE NO.	SHEET NO.	TOTAL SHEETS
N.C.	2017CPT.01.26.10581.1, 44828	2	
STATE PROJ. NO.	F.A. PROJ. NO.	DESCRIPTION	
2017CPT.01.26.10581.1		MAP 2	



LOCATION: MAP 2 - US 64 ALT - FROM WEST CITY LIMITS TO EAST CITY LIMITS IN ROBERSONVILLE

TYPE OF WORK: MILLING, RESURFACING, & LONG LIFE PAVEMENT MARKINGS



BEGIN MAP 2

END MAP 2

NOT TO SCALE

PROJECT LENGTH

LENGTH OF MAP 2 = 1.35 MI.

Prepared in the Office of:
DIVISION OF HIGHWAYS
113 Airport Dr., Edenton NC, 27932

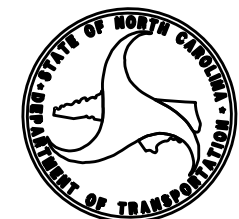
2012 STANDARD SPECIFICATIONS

LETTING DATE:

W.B. HOBBS, P.E.
DIVISION PROJECT MANAGER

C.E. SLACHTA
DIVISION PROPOSALS ENGINEER

DIVISION OF HIGHWAYS
STATE OF NORTH CAROLINA



09/08/09

CONTRACT: DA00357 WBS ELEMENTS: 2017CPT.01.26.10581.1, 44828

STATE OF NORTH CAROLINA
DIVISION OF HIGHWAYS

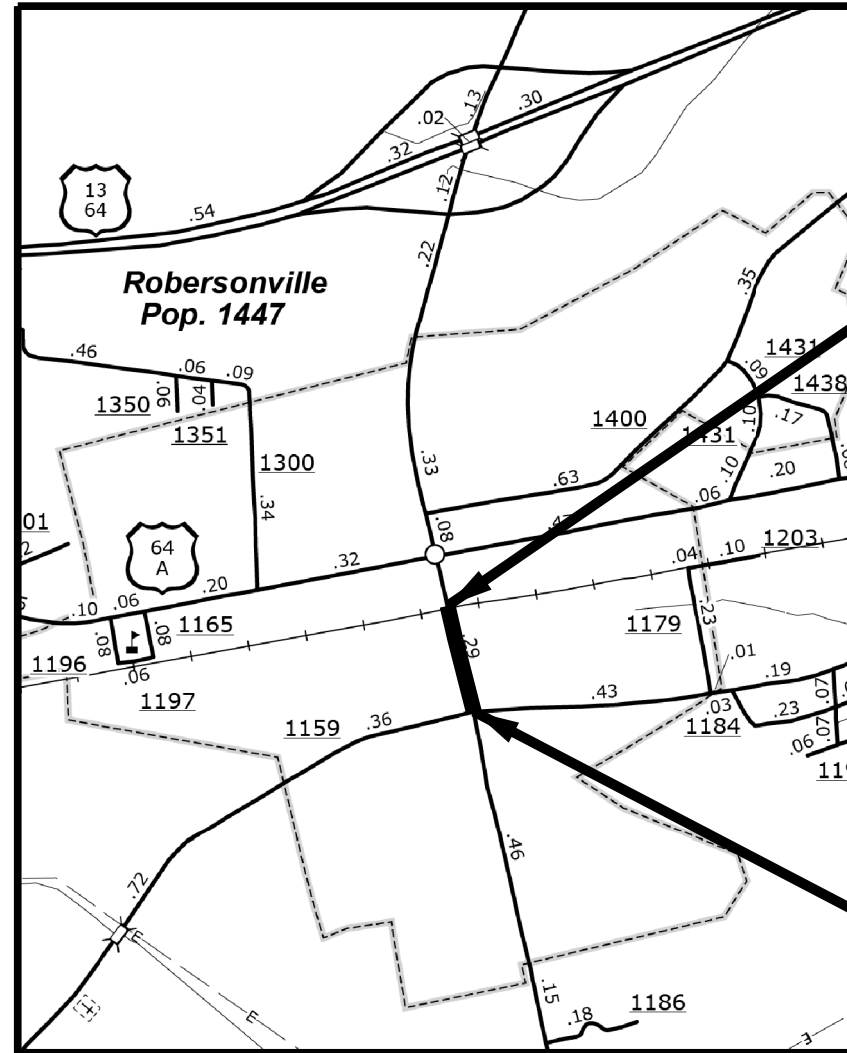
MARTIN COUNTY

STATE	STATE PROJECT REFERENCE NO.	SHEET NO.	TOTAL SHEETS
N.C.	2017CPT.01.26.10581.1, 44828	3	
STATE FUND NO.	F.A.FUND NO.	DESCRIPTION	
44828		MAP 3	



LOCATION: MAP 3 - NC 903 - FROM SECOND STREET TO SOUTH WEST RAILROAD STREET

TYPE OF WORK: CONCRETE CURB AND GUTTERS AND BRICK OVERLAY CROSSWALKS



END MAP 3

BEGIN MAP 3

NOT TO SCALE

PROJECT LENGTH

LENGTH OF MAP 3 = 0.108 MI.

Prepared in the Office of:
DIVISION OF HIGHWAYS

113 Airport Dr., Edenton NC, 27932

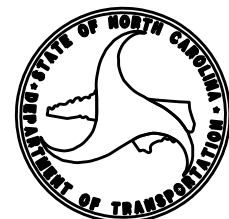
2012 STANDARD SPECIFICATIONS

LETTING DATE:

W.B. HOBBS, P.E.
DIVISION PROJECT MANAGER

C.E. SLACHTA
DIVISION PROPOSALS ENGINEER

DIVISION OF HIGHWAYS
STATE OF NORTH CAROLINA



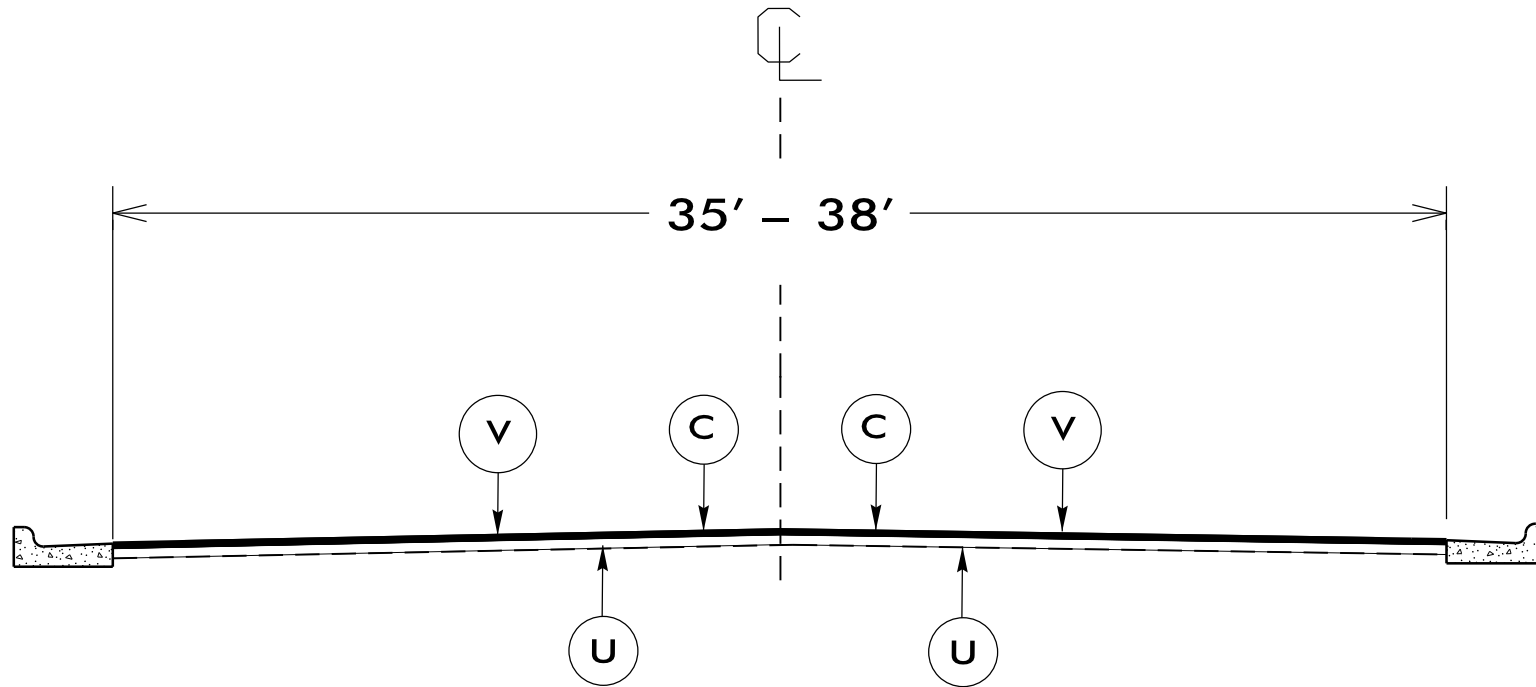
P A V E M E N T S C H E D U L E

C	PROP. APPROX. 1.5" ASPHALT CONCRETE SURFACE COURSE, TYPE S9.5B, AT AN AVERAGE RATE OF 168 LBS. PER SQ. YD.
C	MILLING BITUMINOUS PAVEMENT. 1.5" IN DEPTH.
U	EXISTING PAVEMENT.

PROJECT REFERENCE NO.	SHEET NO.
2017CPT.01.26.10581.1, 44828	4

NOTES:

- *ALL PAVED S.R. ROADS TO BE RESURFACED TO THE ENDS OF THE RADII., OR AS DIRECTED BY THE ENGINEER
- *EDGES, PAVEMENT WIDENING, INTERSECTIONS, AND BRIDGE FLARES ARE INCLUDED IN THE SUMMARY OF QUANTITIES
- *CONTRACTOR SHALL MILL 1.5" BELOW EXISTING EDGE OF CONC. CURB & GUTTER.
- *SAW CUTTING OF EXISTING CONCRETE PAVEMENT SHALL BE CONSIDERED INCIDENTAL TO THE LINE ITEM 2'-6" CURB & GUTTER AND SHALL BE THE CONTRACTORS RESPONSIBILITY TO DETERMINE CONCRETE THICKNESS.



TYPICAL SECTION NO. 1

USE WITH MAPS 1 - 3

NTS

24-MAY-2017 10:25
 C:\Users\caj\Documents\Projects\2017\2017-2018\1\Pre-Bid Documents\DA00357.dgn
 PROJECT WORKING FILES\District Three\DA00357 Primary Resurfacing US64-Alt & NC903 Mar-tin Co. (2017-2018)\1\Pre-Bid Documents\DA00357.dgn

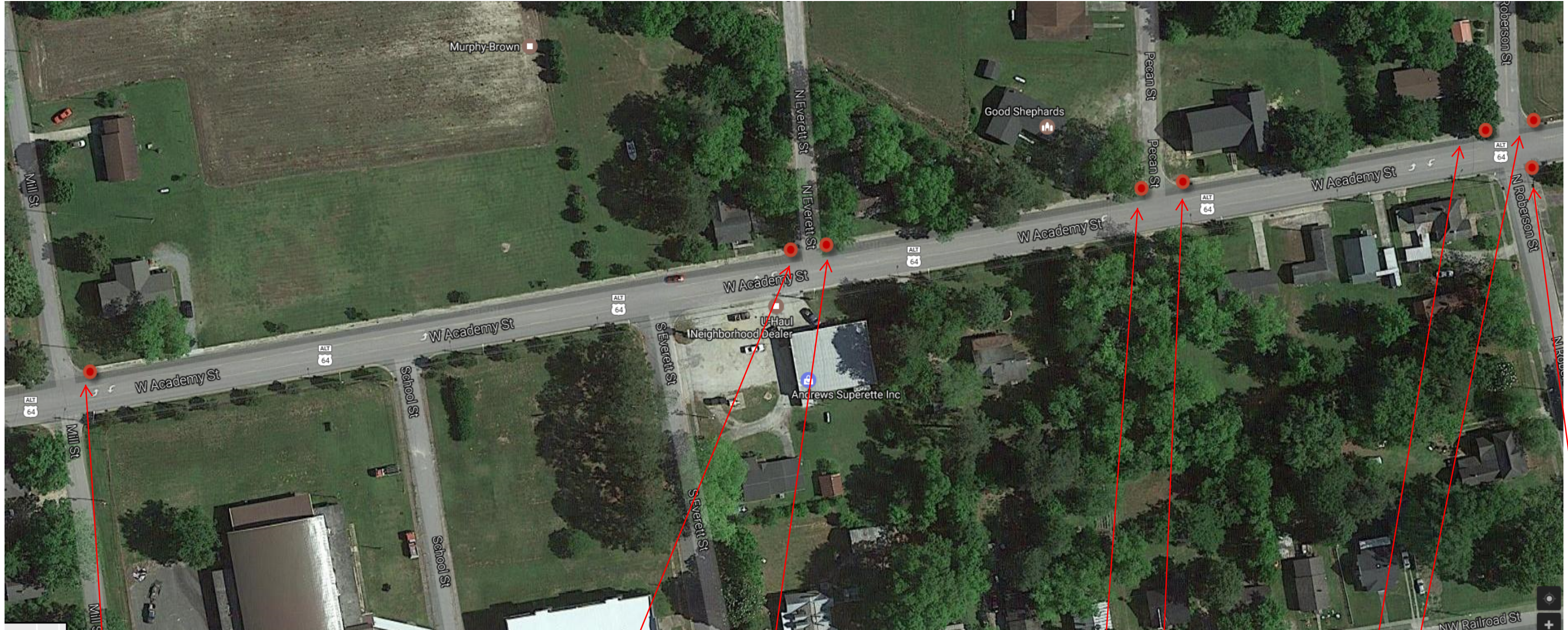
PROJECT NO.	SHEET NO.
2017CPT.01.26.10581.1, 44828	5

SUMMARY OF QUANTITIES

PROJECT NO	COUNTY	MAP NO	ROUTE	DESCRIPTION	TYP	LANES	LANE TYPE	FINAL SURFACE TESTING REQUIRED	WARM MIX ASPHALT REQUIRED	LENGTH MI	WIDTH FT	MOBILIZATION LS	PLACEMENT OF EPOXY PATTERNED OVERLAY SF	1 1/2" MILLING SY	SURFACE COURSE, S9.5B TONS	ASPHALT BINDER FOR PLANT MIX TONS	FRAME WITH GRATE, STD 840.**** ^ EA	REBUILD EXISTING DRAINAGE STRUCTURE EA	2'-6" CURB & GUTTER LF	4" CONCRETE SIDEWALK SY	CONCRETE CURB RAMPS EA	RETROFIT EXISTING CURB RAMPS EA	ADJ. OF MANHOLES EA	ADJ. OF METER OR VALVE BOX EA	SEDIMENT CONTROL STONE TON	1/4" HARDWARE CLOTH LF	WORK ZONE ADV/GEN WARN SIGN SF	TEMPORARY TRAFFIC CONTROL LS	UNPAVED TRENCHING ^ LF	JUNCTION BOX (STANDARD SIZE) EA	INDUCTIVE LOOP LF	LEAD-IN CABLE LF
2017CPT.01.26.10581.1	Martin	1	NC 903	SOUTH CITY LIMITS IN ROBERSONVILLE TO US 64 BYPASS	1	3	MU	NO	NO	1.72	38	1		40,250	3,393	204							22	23			500	1	200.00	3	1,000	200
2017CPT.01.26.10581.1	Martin	2	US 64 ALT	FROM WEST CITY LIMITS TO EAST CITY LIMITS IN ROBERSONVILLE	1	3	MU	NO	NO	1.35	37	*		30,800	2,593	156		250	100	15	6	11	9			500	*					
44828	Martin	3	NC 903	FROM NORTH RAILROAD TO SECOND STREET	2	2	MU	NO	NO	0.108	35	*	840				3.00	4.00	1,200	200					5	50		*				
GRAND TOTAL										3.178		1	840	71,050	5,986	360	3	4	1,450	300	15	6	33	32	5	50	1,000	1	200	3	1,000	200

THERMOPLASTIC AND PAINT QUANTITIES

PROJECT NO	COUNTY	MAP NO	ROUTE	DESCRIPTION	TYP	LANES	LANE TYPE	LENGTH	WIDTH	4" X 90 M WHITE THERMO LF	4" X 120 M YELLOW THERMO LF	8" X 120 M YELLOW THERMO LF	16" X 120 M WHITE THERMO LF	24" X 120 M WHITE THERMO LF	THERMO RXR 120 M EA	THERMO LT ARROW 90 M EA	THERMO RT ARROW 90 M EA	4" WHITE PAINT LF	4" YELLOW PAINT LF	SNOW PLOWABLE MARKERS EA
2017CPT.01.26.10581.1	Martin	1	NC 903	SOUTH CITY LIMITS IN ROBERSONVILLE TO US 64 BYPASS	1	3	MU	1.72	38	5,000	19,000	660	100	225	4	10	4	5,000	19,000	200
2017CPT.01.26.10581.1	Martin	2	US 64 ALT	FROM WEST CITY LIMITS TO EAST CITY LIMITS IN ROBERSONVILLE	1	3	MU	1.35	37	1,200	16,000	100		60		20	20	1,200	16,000	200
44828	Martin	3	NC 903	FROM NORTH RAILROAD TO SECOND STREET	2	2	MU	0.108	35											
GRAND TOTAL								3.178		6,200	35,000	760	100	285	4	30	24	6,200	35,000	400



NEW ADA RAMP

NEW ADA RAMP

NEW ADA RAMP

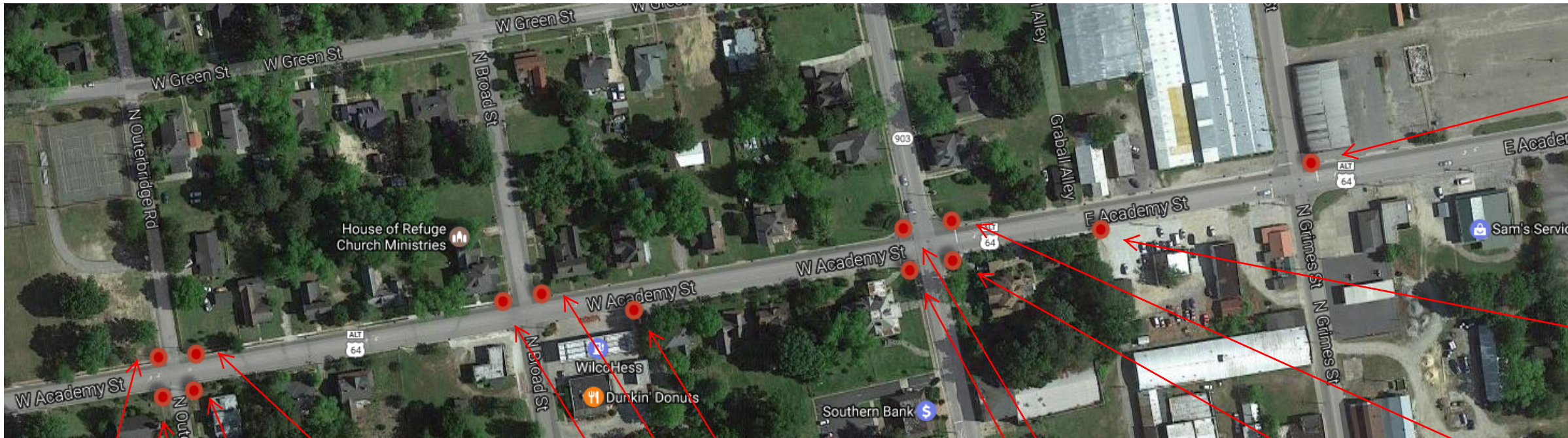
NEW ADA RAMP

NEW ADA RAMP

NEW ADA RAMP

NEW ADA RAMP

NEW ADA RAMP



NEW ADA RAMP

RETROFIT RAMP

RETROFIT RAMP

NEW ADA RAMP

NEW ADA RAMP

NEW ADA RAMP

RETROFIT RAMP

NEW ADA RAMP

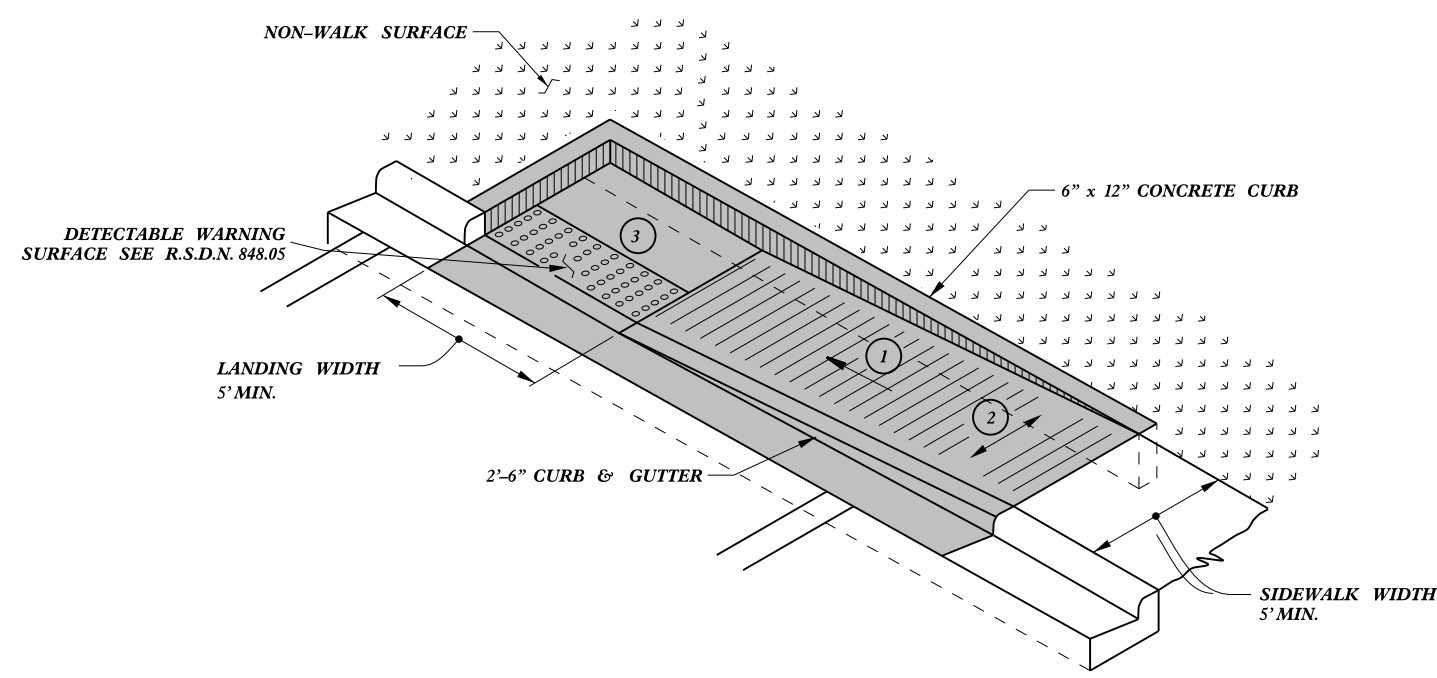
RETROFIT RAMP

RETROFIT RAMP

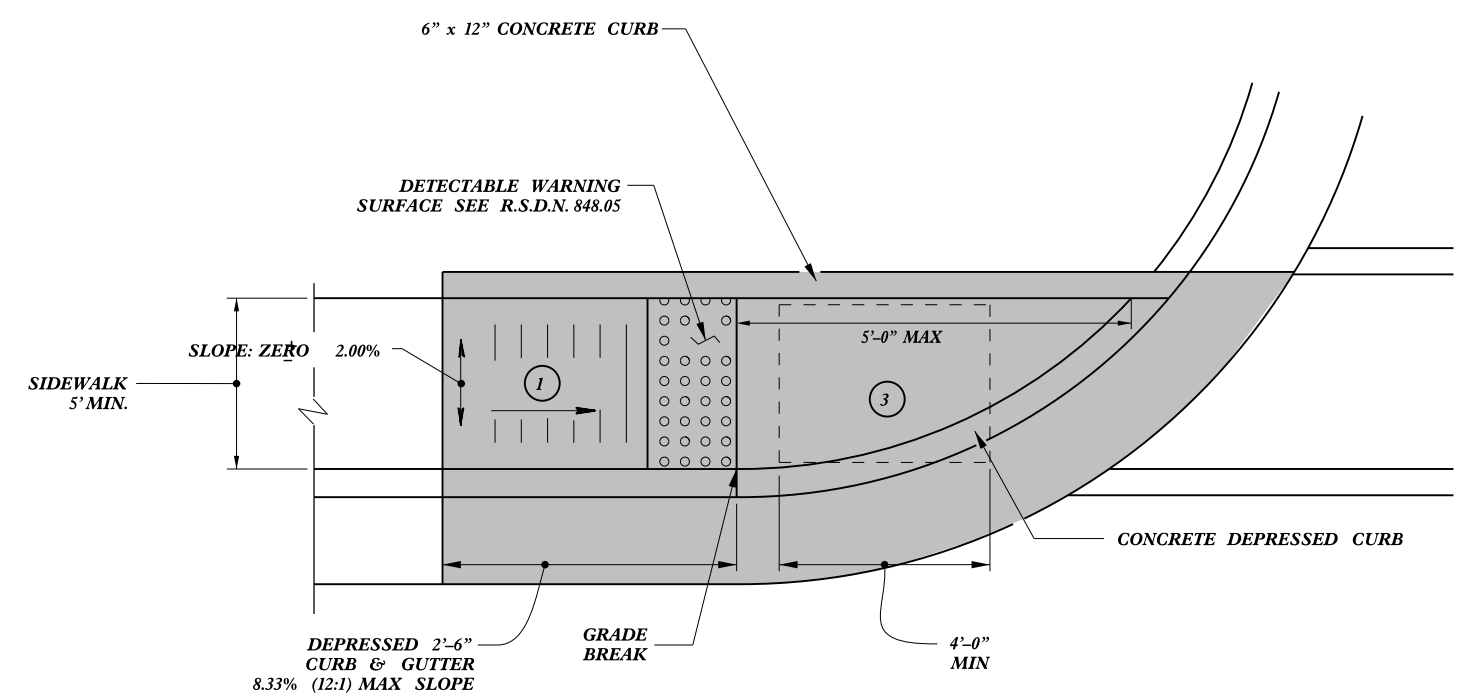
NEW ADA RAMP

NEW ADA RAMP

RETROFIT RAMP



TYPE 1A



TYPE 1

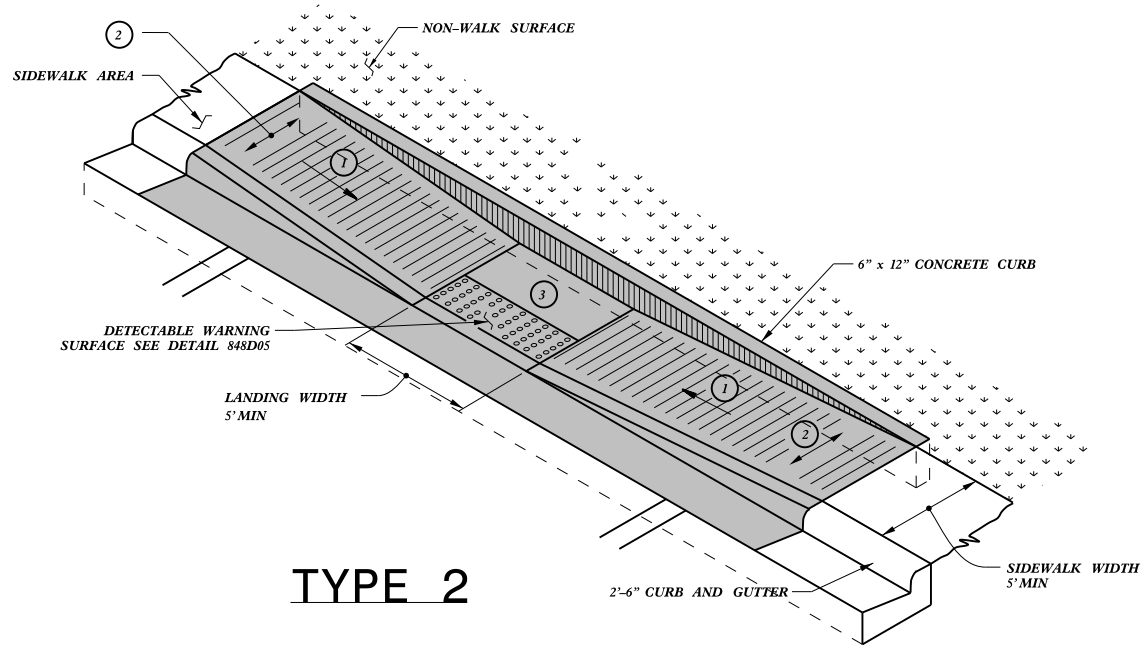
- ① 8.33% (12:1) MAX RAMP SLOPE
- ② CROSS SLOPE: 2.00%
- ③ CURB RAMPS REQUIRE A (4'-0") MINIMUM LANDING WITH A MAXIMUM CROSS SLOPE AND LONGITUDINAL SLOPE OF 2.00% WHERE PEDESTRIANS PERFORM TURNING MANEUVERS. SLOPE TO DRAIN TO CURB.

PAY LIMITS FOR CURB RAMP

CONTRACT STANDARDS AND DEVELOPMENT UNIT	
Office 919-707-6950	FAX 919-250-4119
CURB RAMPS	
Directional Ramps	
ORIGINAL BY: J.S. HOWERTON	DATE: 7/7/11
MODIFIED BY:	DATE:
CHECKED BY:	DATE:
FILE SPEC: sstds/2012CurbRamp/CurbRampDetails.dwg	

REFER TO ROADWAY STANDARD DRAWING NUMBER 848.05 SHEET 3 OF 3 FOR ALL RAMP NOTES

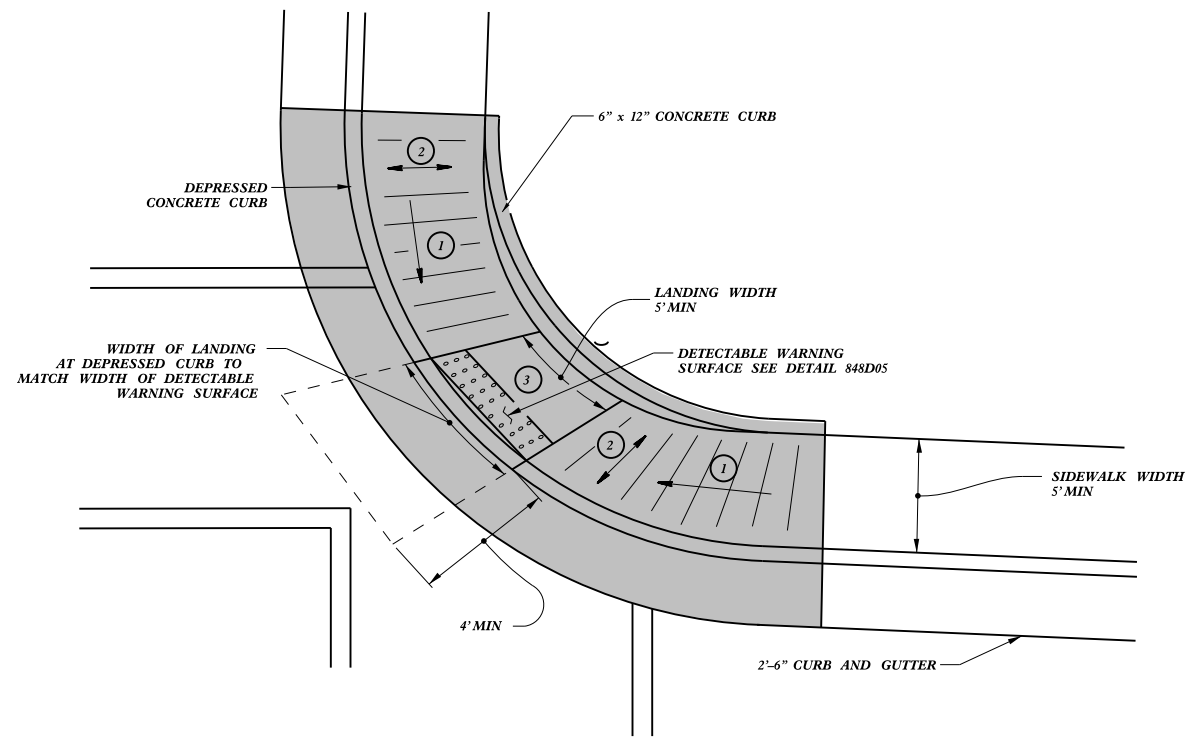
23-MAR-2012 15:05 J:\Contracts\2012\Standard Drawings\2012 Standard Drawings\Curb Ramp Special Details\Curb Ramp Details.dwg J.Howerton AT 15023750



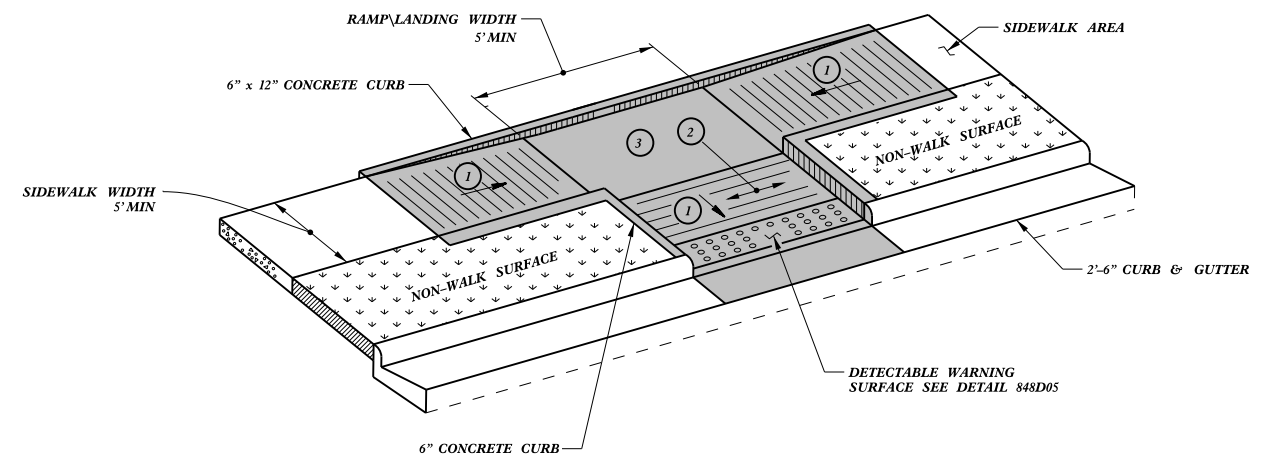
TYPE 2

 PAY LIMITS FOR CURB RAMP

- ① 8.33% (12:1) MAX RAMP SLOPE
- ② CROSS SLOPE: 2.00%
- ③ CURB RAMPS REQUIRE A (4'-0") MINIMUM LANDING WITH A MAXIMUM CROSS SLOPE AND LONGITUDINAL SLOPE OF 2.00% WHERE PEDESTRIANS PERFORM TURNING MANEUVERS. SLOPE TO DRAIN TO CURB.



TYPE 2A



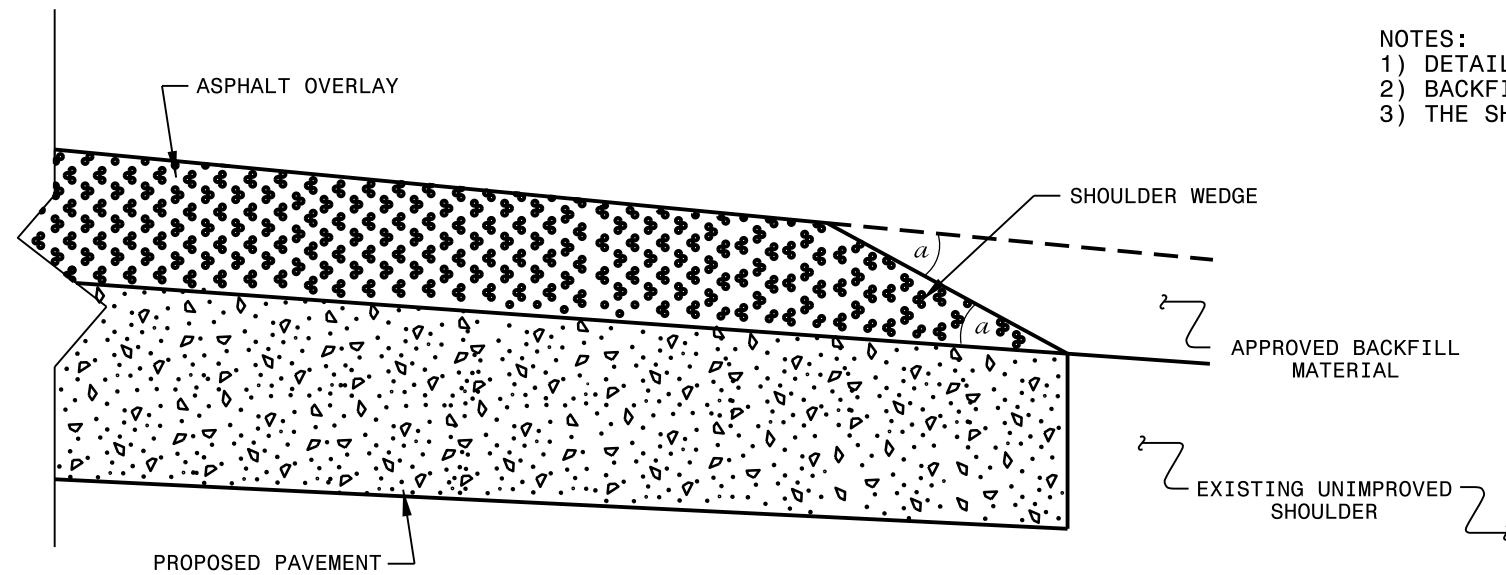
TYPE 3

CONTRACT STANDARDS AND DEVELOPMENT UNIT	
Office 919-707-6950	FAX 919-250-4119
CURB RAMPS	
Parallel Ramps	
ORIGINAL BY: J.S. HOWERTON	DATE: 7/7/11
MODIFIED BY: _____	DATE: _____
CHECKED BY: _____	DATE: _____
FILE SPEC: sstds/2012CurbRamp/CurbRampDetails.dwg	

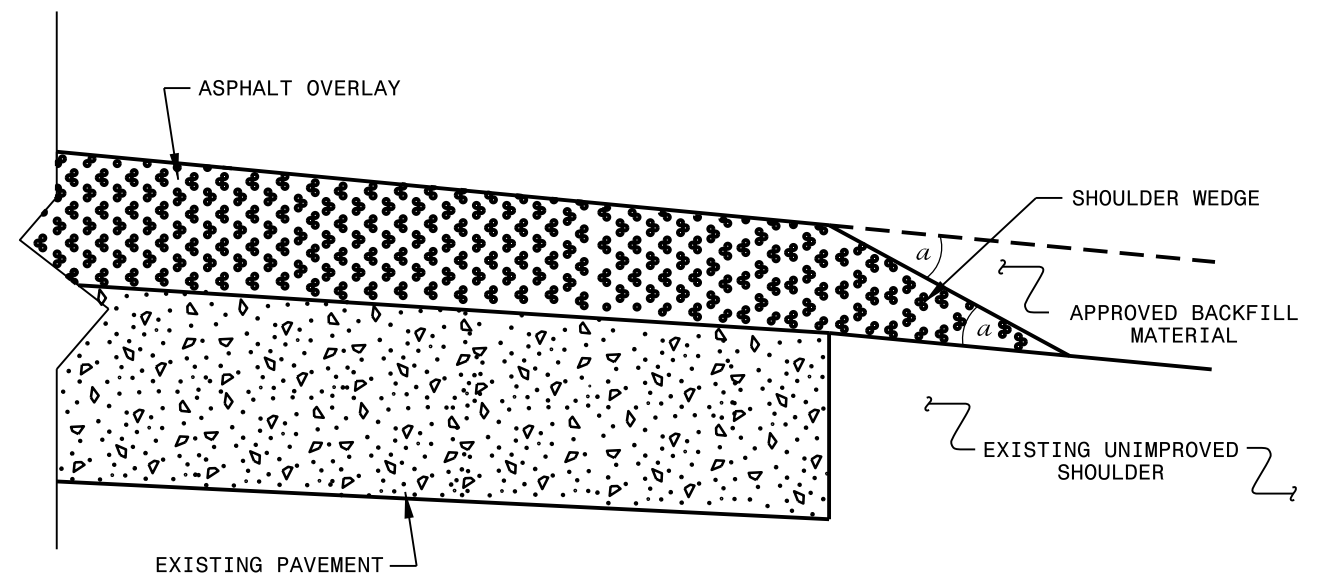
REFER TO ROADWAY STANDARD DRAWING NUMBER 848.05 SHEET 3 OF 3 FOR ALL RAMP NOTES

23-MAR-2012 15:07 J:\Contracts\2012\Standard Drawings\2012 Standard Drawings\Curb Ramp Special Details\Curb Ramp Details.dwg J:\Contracts\2012\Standard Drawings\Howerton\JHowerton

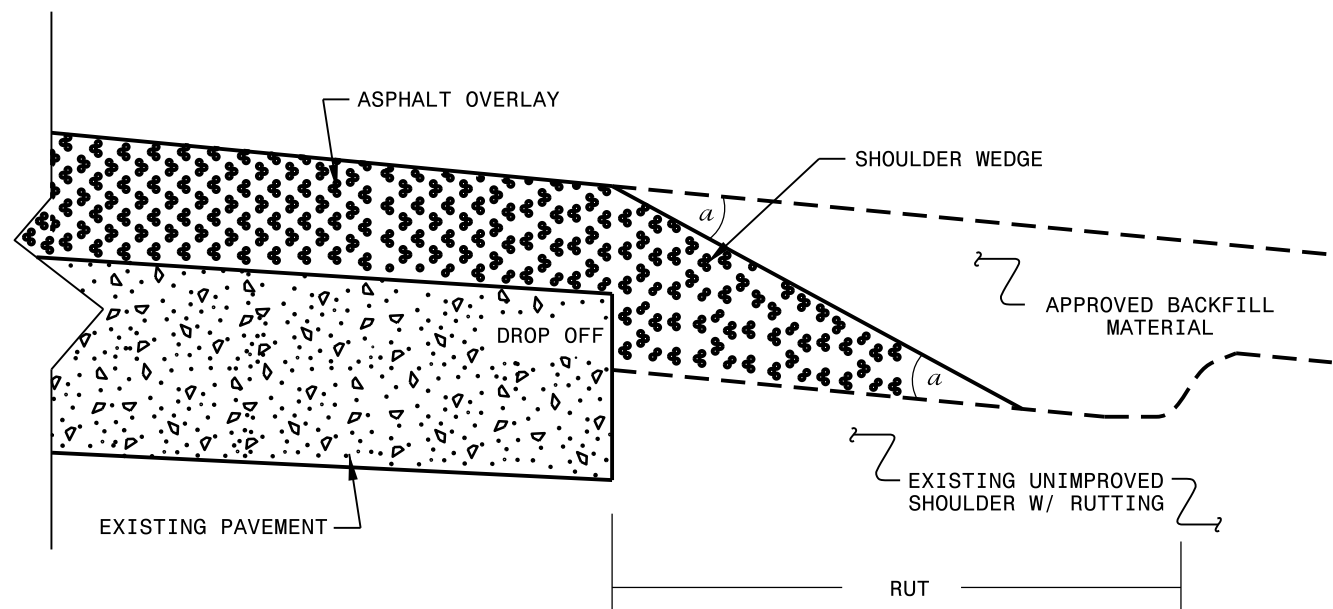
- NOTES:
- 1) DETAIL DOES NOT APPLY TO OGAFc AND ULTRA-THIN BONDED WEARING COURSE.
 - 2) BACKFILL SHOULDER WITH APPROVED MATERIAL.
 - 3) THE SHOULDER WEDGE DEVICE MAY BE DISENGAGED AT PAVED DRIVEWAYS AND SIDE STREETS.



SHOULDER WEDGE DETAIL
 (Resurfacing Projects w/ Widening or
 with Existing Paved Shoulder having no dropoffs)



SHOULDER WEDGE DETAIL
 (Resurfacing Projects w/ NO Widening)



SHOULDER WEDGE DETAIL
 (Resurfacing Adjacent to
 Rutted Shoulder)

- SHOULDER WEDGE ANGLE = 30°

CONTRACT STANDARDS
 AND DEVELOPMENT UNIT
 Office 919-707-6950 FAX 919-250-4119

**SHOULDER WEDGE
 DETAILS**

ORIGINAL BY: T.SPELL DATE: 7-19-11
 MODIFIED BY: DATE: 10/16/12
 CHECKED BY: DATE:
 FILE SPEC.: susr/details/stand/shoulderwedgedetail.dgn

SYSTEMS DESIGN
 USER NAME